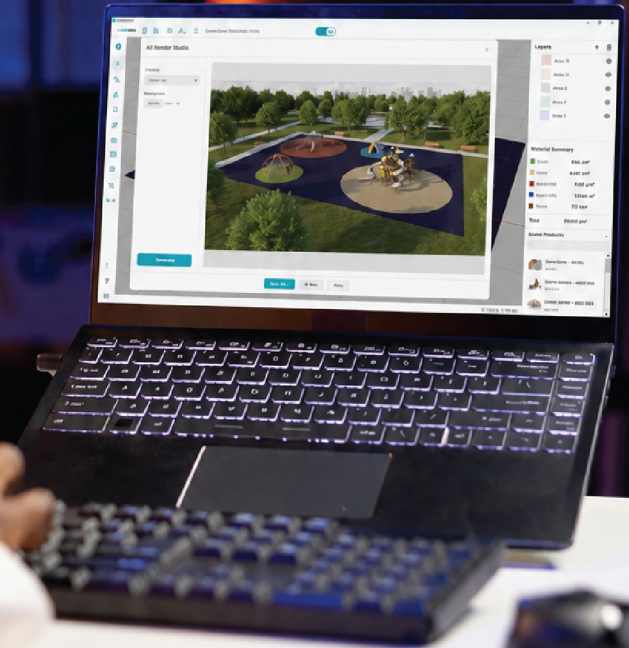


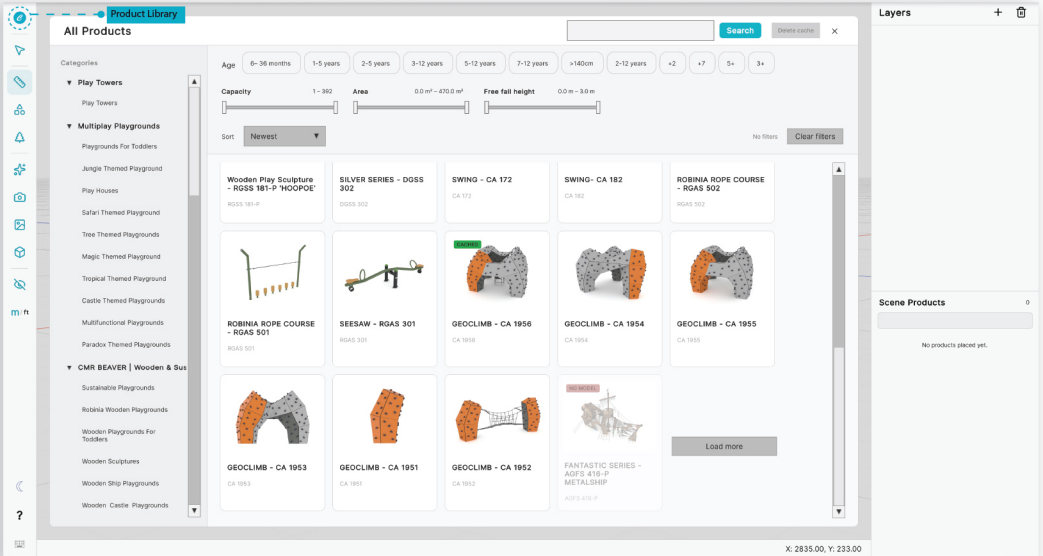
CEMERZONE[®]




"Watch Now"





Cemer[®]
"dreams come true"





With Cemerzone, you can browse the Product Library to select equipment that meets your needs, explore different combinations, and easily start building your project.


Product Library • 


 • It is used to move the floor


You can take precise measurements between products, floors, and areas. • 


Landscape elements such as trees and rocks can be added to the project. • 


Taking a screenshot of the fieldwork. • 

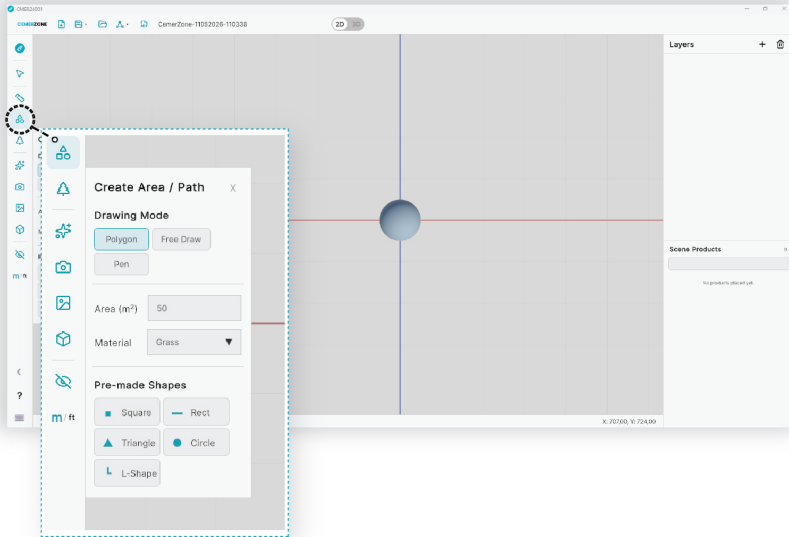
The folder where your 3D export files are saved. • 

You can convert units (m/ft) in this section. • 

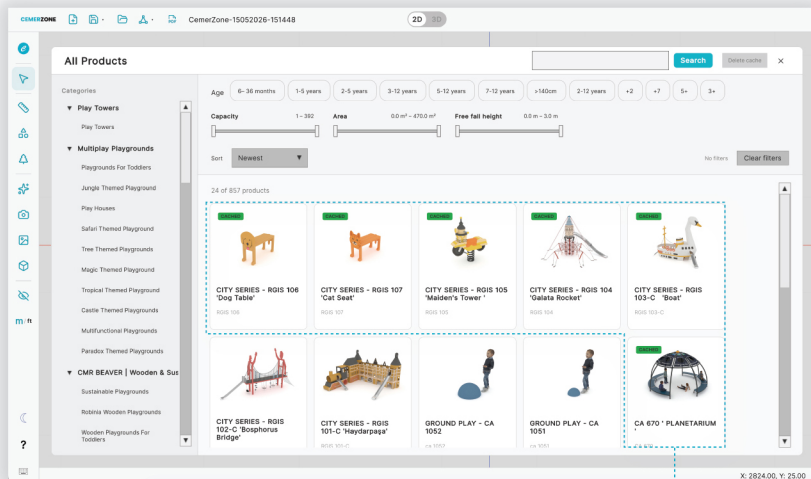
•  • You can use it in dark or light mode, depending on your preference.

User Guide • 

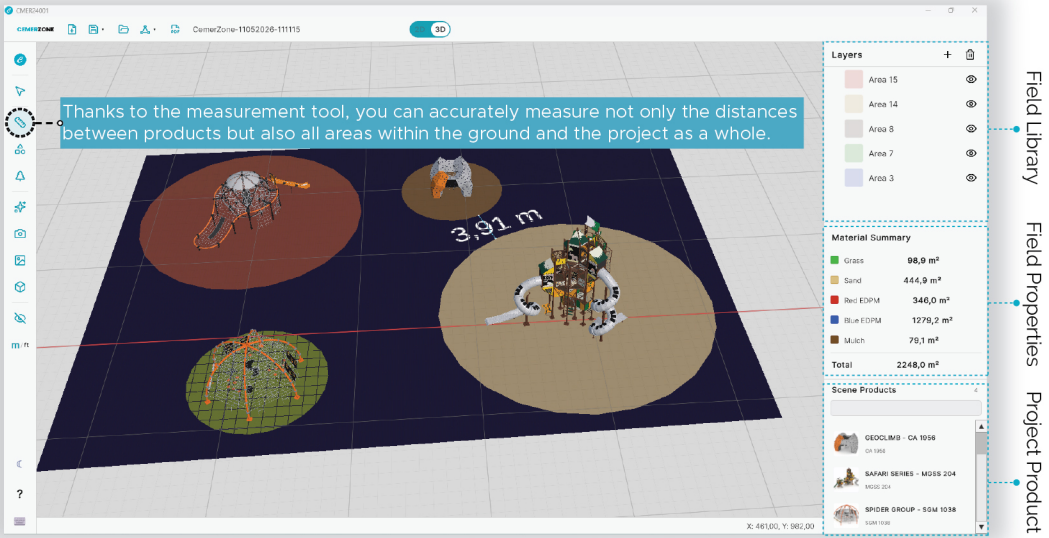
•  • Keyboard Shortcuts



> "It simplifies surface area creation; whether using freehand drawing, polygon or pen tools, or ready-made shapes, you can quickly create your area with ease."



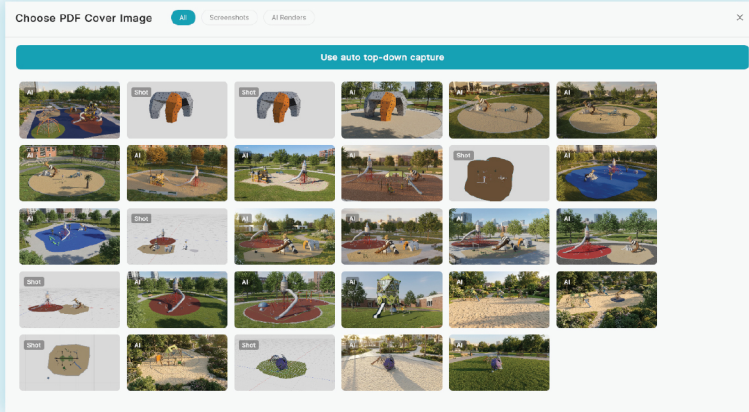
Cached: Products previously downloaded to the library.



Field Library

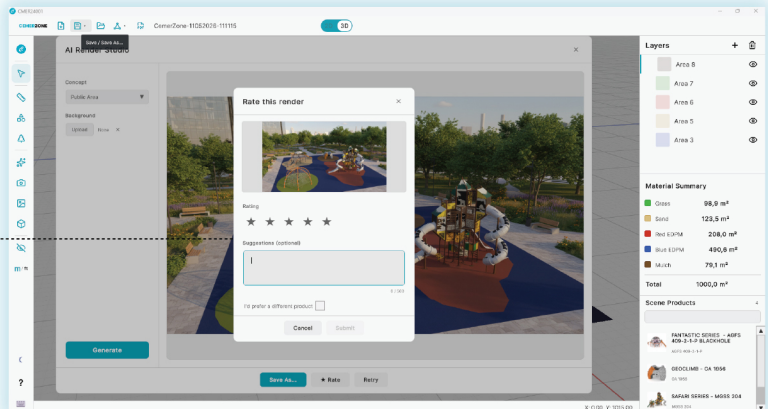
Field Properties

Project Product List



Thanks to CERERZONE®'s AI-powered new Render Studio feature, your designs are transformed into highly realistic visuals with advanced lighting, material, and environmental details.

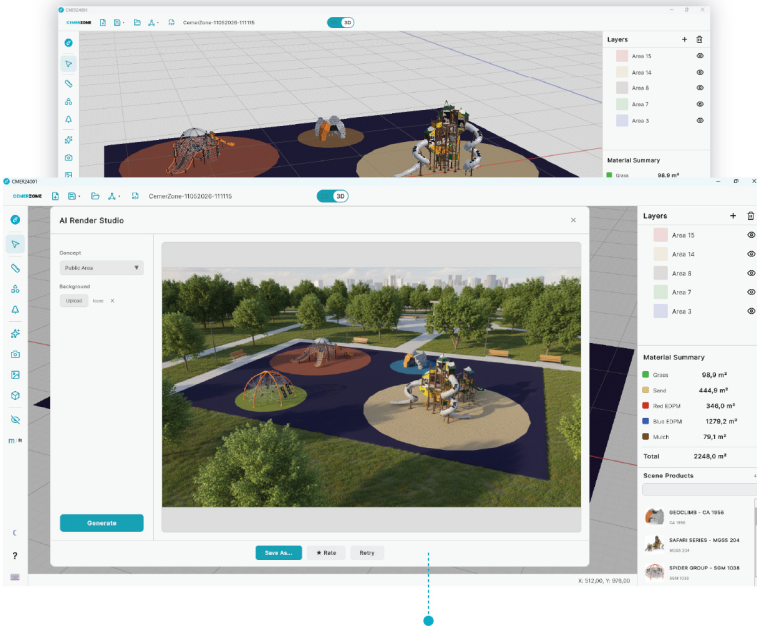
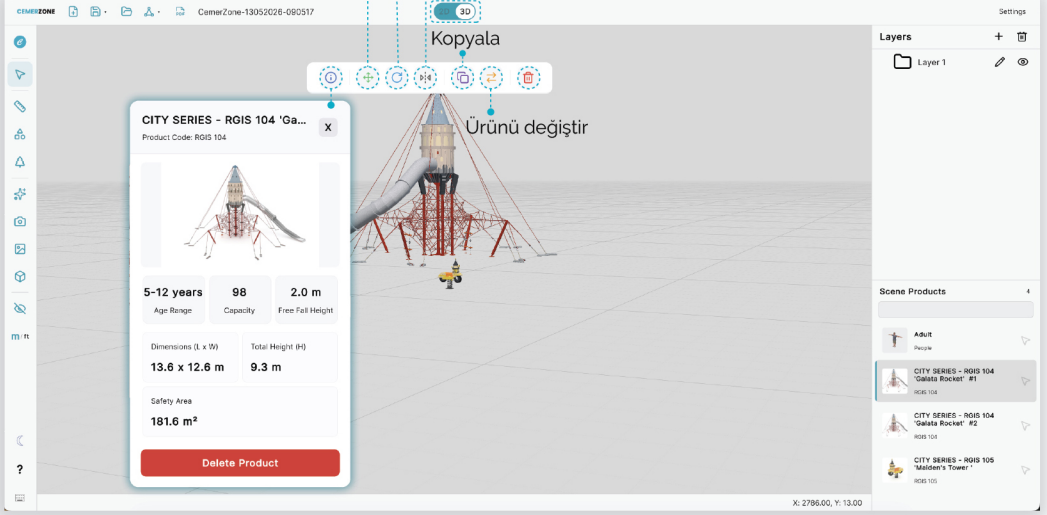
You can review the project you have prepared and share your opinions and feedback about our application with us.



Product safety area configuration

Rotate

Enables the transition between 2D and 3D views.



With the new AI-powered Render Studio feature of CEREMZONE®, your designs are transformed into highly realistic visuals with enhanced lighting, materials, and environmental details.

When the project is completed, users must be defined as dealers by CEMER and granted authorization in order to view the prices of the products used in their projects. After completing their projects, all users can request a quotation by clicking the "Request Offer" button.



CEMERZONE: Design Empowered by Artificial Intelligence

CEMER brings playground and urban space design processes into the digital world with its innovative area configurator. Architects, landscape architects, and project developers can easily manage product selection, space planning, and project presentations through a single platform thanks to its user-friendly interface.

The next-generation AI-powered Render Studio feature takes the design experience even further. With artificial intelligence technology, projects are transformed into high-quality render visuals with realistic lighting, materials, shadows, and environmental details. This allows users to experience even unbuilt projects in their most realistic form and create impressive presentations for their clients.

CEMERZONE



Create Your Own Space!