

CEMER**ZONE**

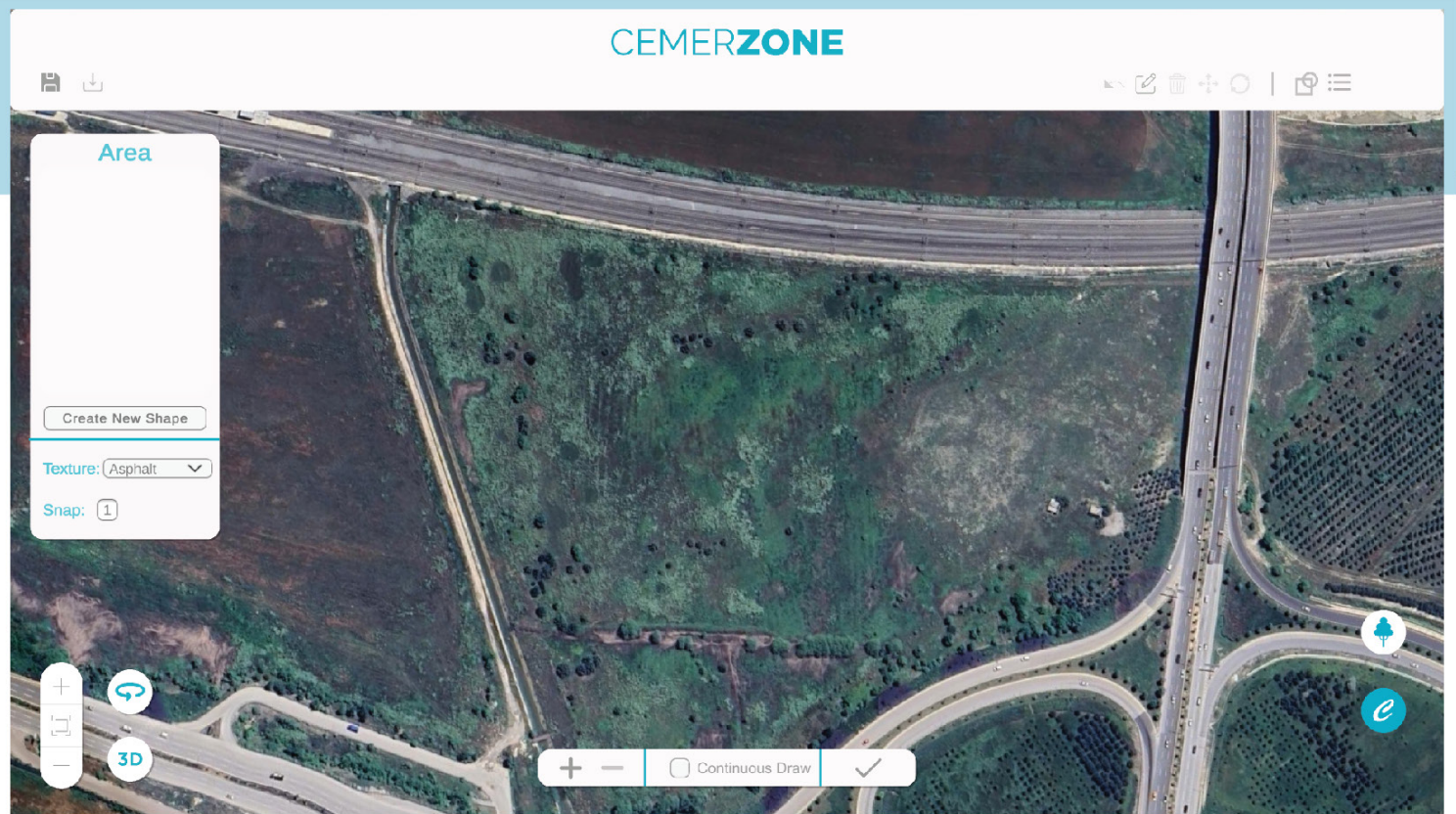
Create your own space with full control over your projects, simple design and excellent results!



**Design your
own space**

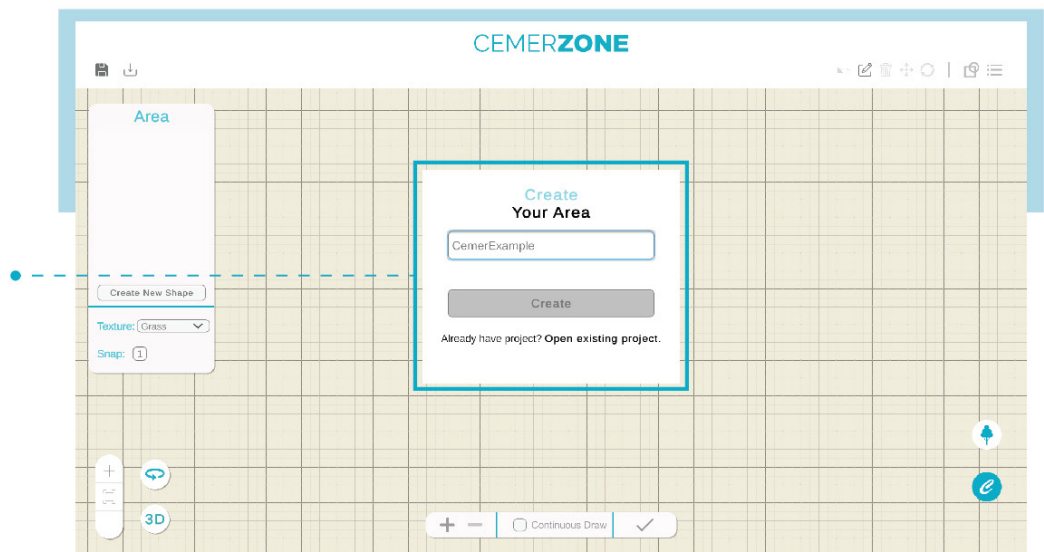


Cemer®
"dreams come true"

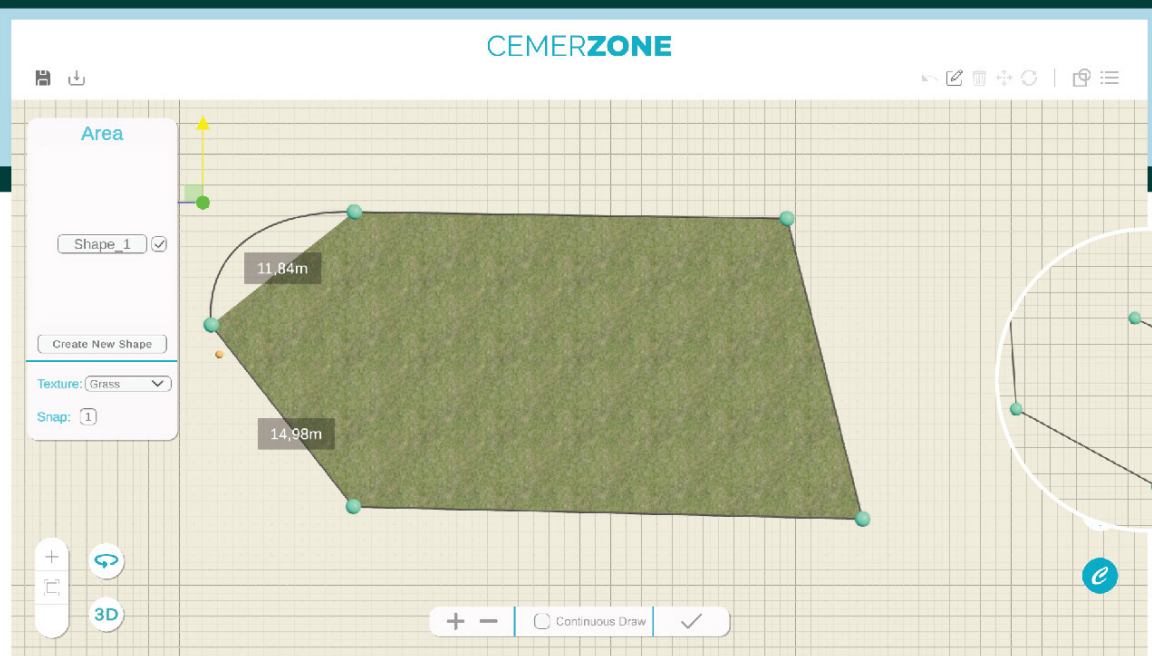


Users can start by drawing the areas they want to design using the Google Earth programme or by transferring photos of their existing areas to the configurator interface.

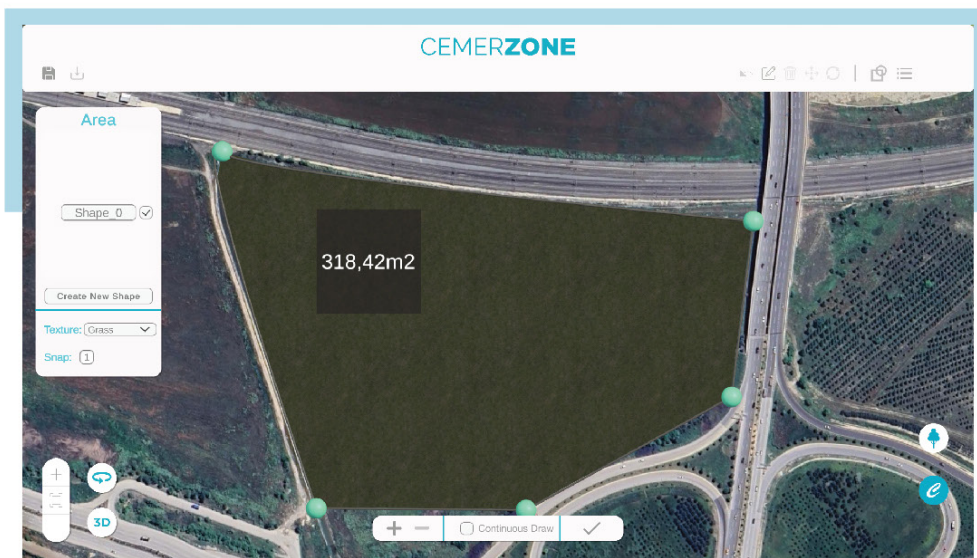
By naming your project, you can choose to either continue working on it from where you left off or to proceed from a previously saved version.



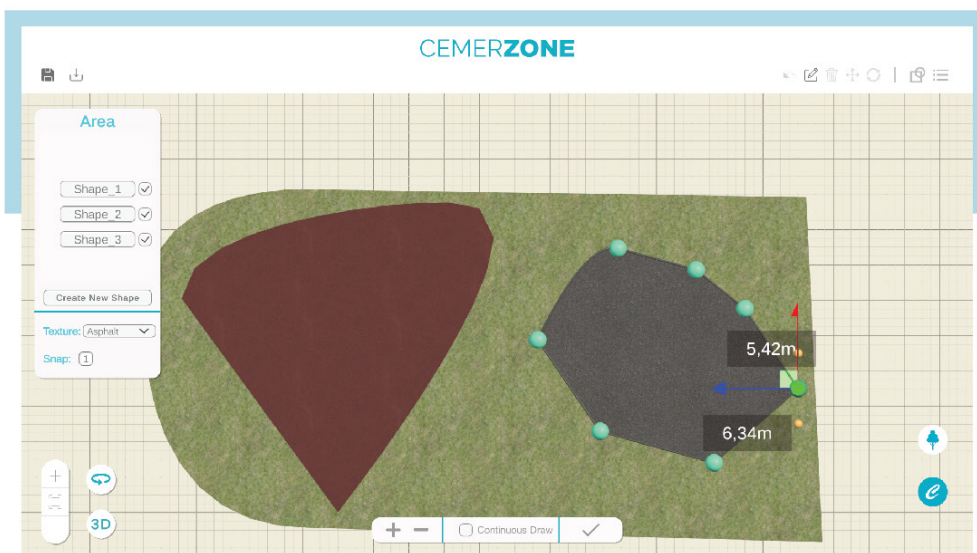
After selecting your field, you can use a template for your field.

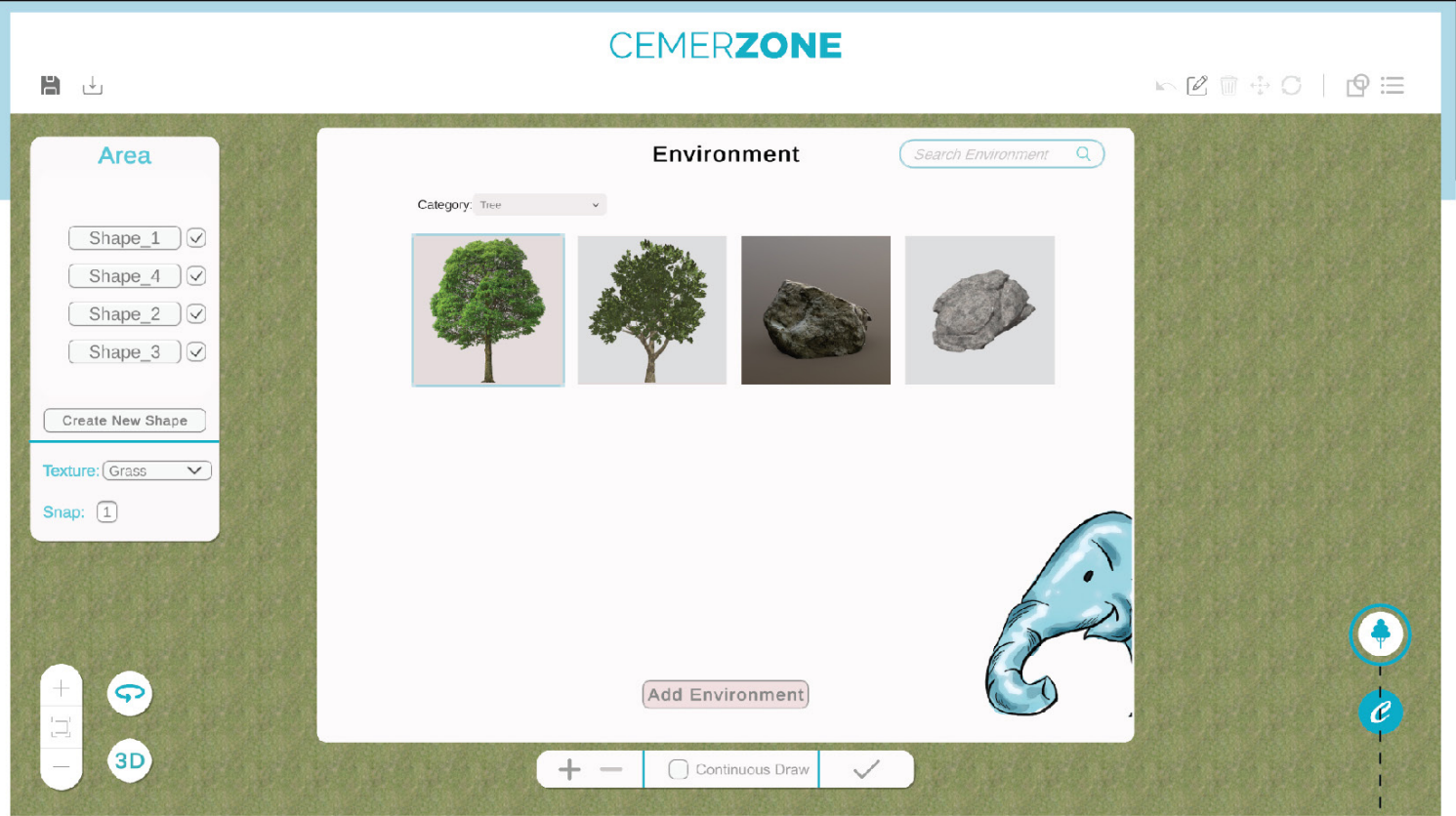


Or you can determine the shape of your area by drawing it yourself.

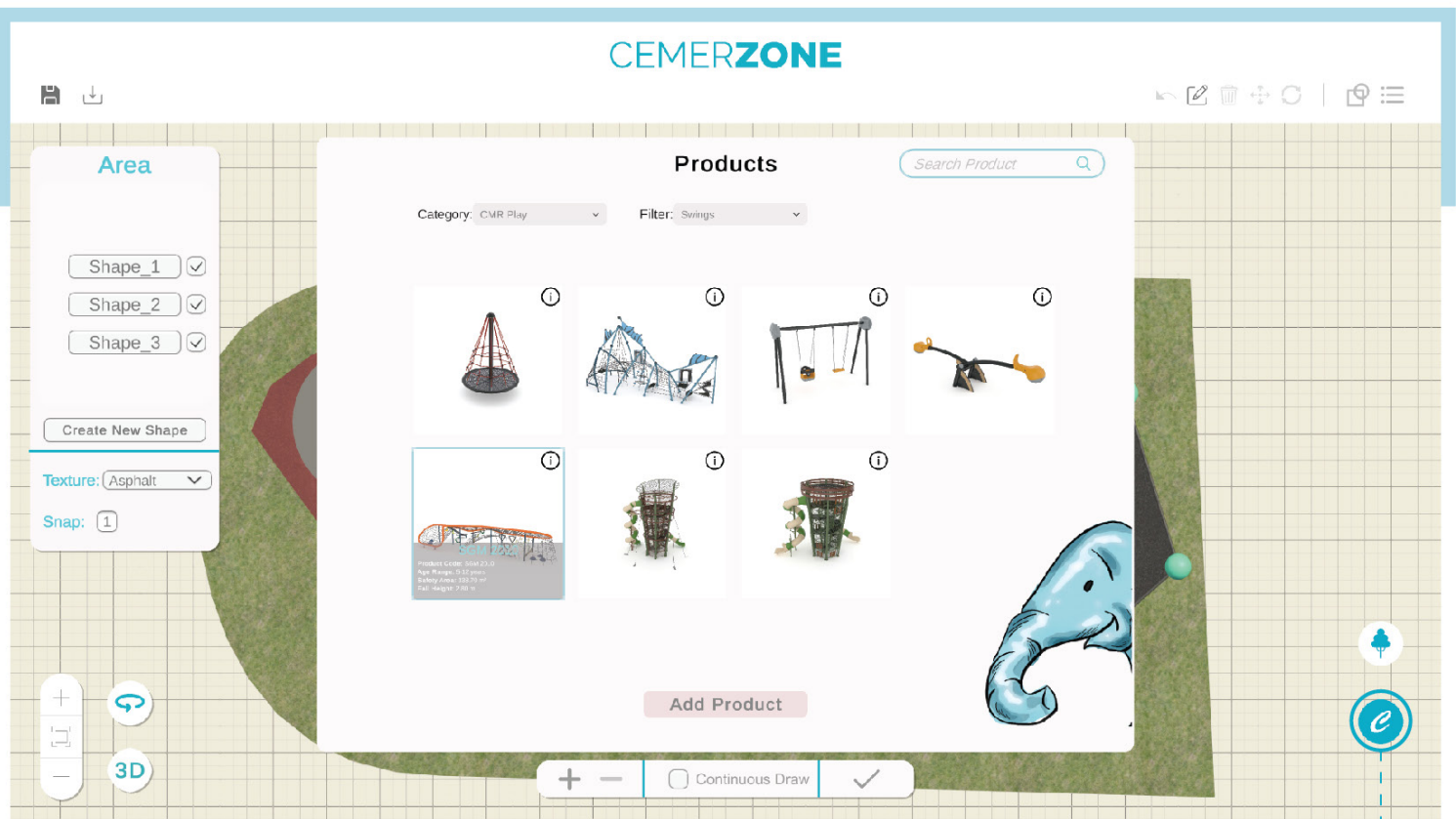


The users can continue to drawings by dividing the areas with the desired measuring.

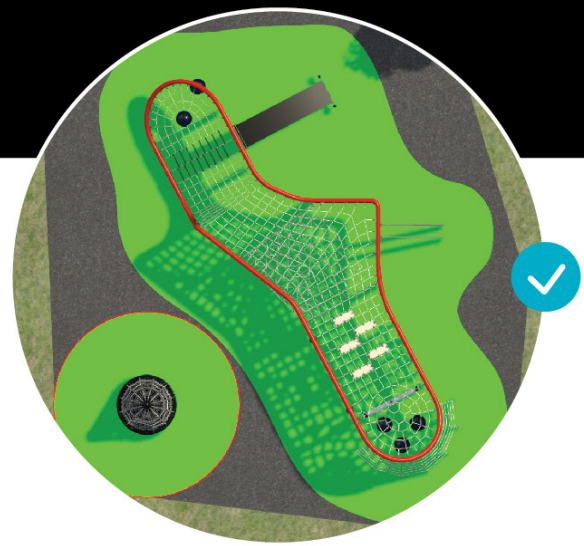




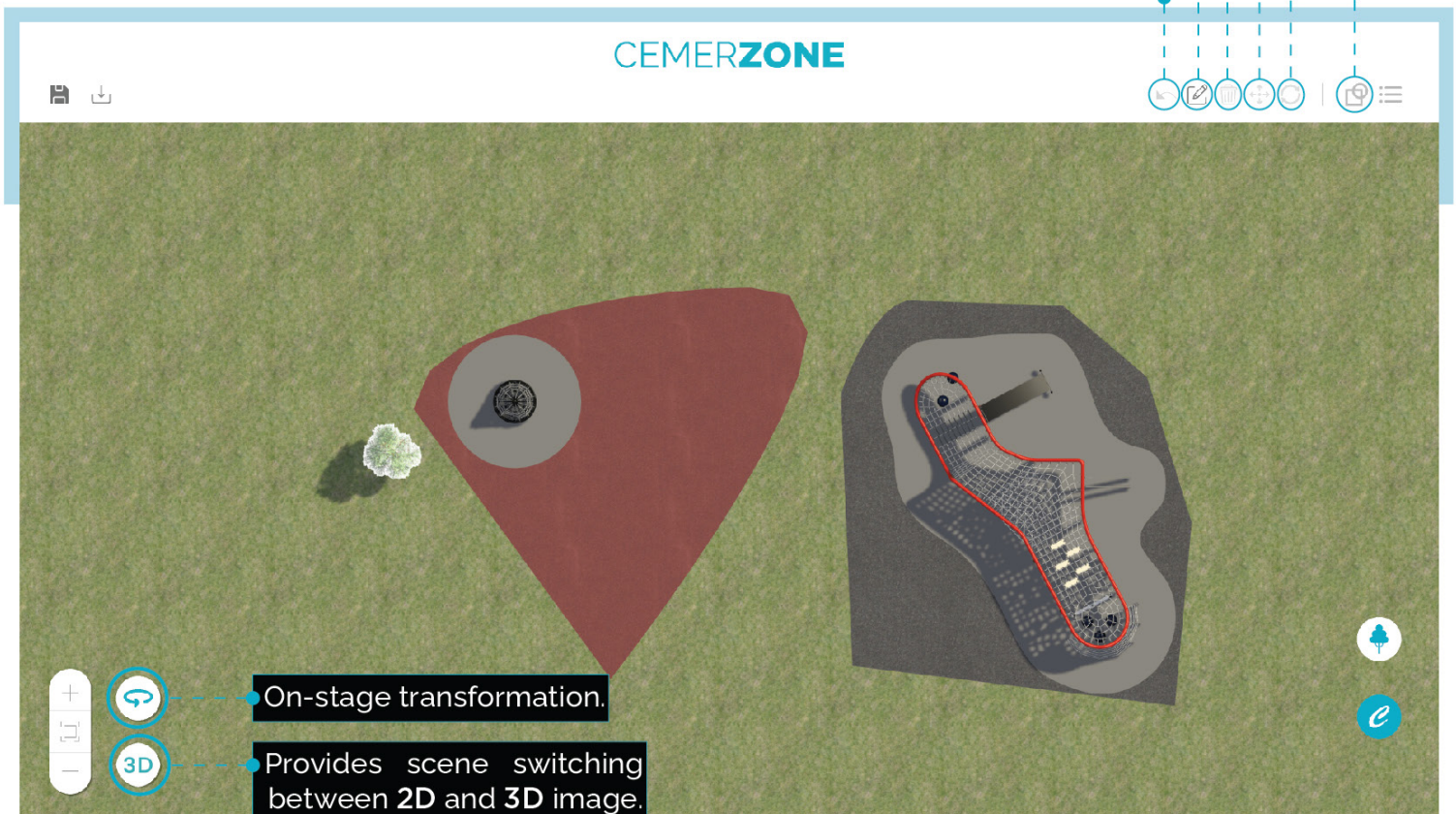
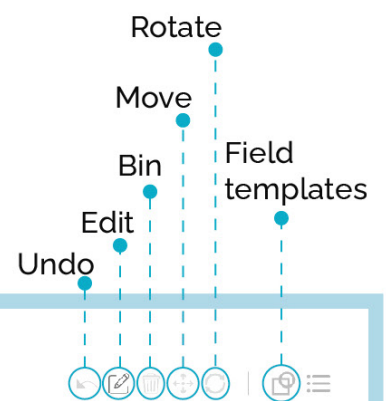
You can enrich the appearance of the area by adding landscape content such as trees and rocks to your project.



After drawing the areas, users can access the products in the **Cemer library** by clicking on the catalogue button and import them into the areas they have created.



The safety areas drawn according to the conformity of TSE and TUV standards are displayed in red when they overlap, while they are displayed in green when the area layout is used in accordance with the safety areas.





After completing the layout of the products, you can view them in **3D** in this way.



When the project has been done, the users need to be defined as a dealer by CEMER and get authorisation in order to see the prices of the products that the users have put on their projects.

After completing their projects, all users can request a quote by clicking the '**Request Offer**' button.

After completing your project, you can access the project details document. Users who have received dealership approval can access the area and product price information in the project in detail.

CEMERZONE

Izmir, Turkiye
info@cemer.com.tr / +902328538704
cemer.com

Project Details

Project Name: CemerExample
Date: Feb 29, 2024
Account Rep: Casey Williams
Phone: 4444 555 555
Email: dealer@customer.com

Products Used

Product Code	Product Name	Qty	Unit Price
SGM 1011D	Spider Group	1	\$1325
SGM 2010	Spider Grup	1	\$1678
Oak Tree	Environment	1	\$45
Total			\$3048

Project Areas

Material	Area Name	Area(m2)
Grass	Shape1	151,50
Grass	Shape4	41577,98
EPDM	Shape2	178,81
Asphalt	Shape3	239,41

Layout Plan



Project Views



*Please note that the prices listed above are symbolic.



CEMER continues its innovation by offering a space configurator designed not only for customers, but also for architects and landscape architects. This feature allows users to design their own projects with CEMER's fully supervised products.

Customers, architects and landscape architects can now easily design their own spaces using the wide range of products offered by CEMER. This configurator gives users the opportunity to select products with the features they want and organize their space exactly as they want it.

CEMER's space configurator allows customers and professionals to showcase their creativity and design skills. At the same time, it ensures long-term satisfaction by guaranteeing the quality and durability of projects designed with fully controlled products.

With this feature, clients and professionals now have more control over the realization of their projects. CEMER's field configurator simplifies the design process, saving time and resources, while guaranteeing excellent results.

Thanks to this innovative feature designed for customers and professionals, CEMER users can design and realize their projects as they wish, without compromising on quality and safety.

